

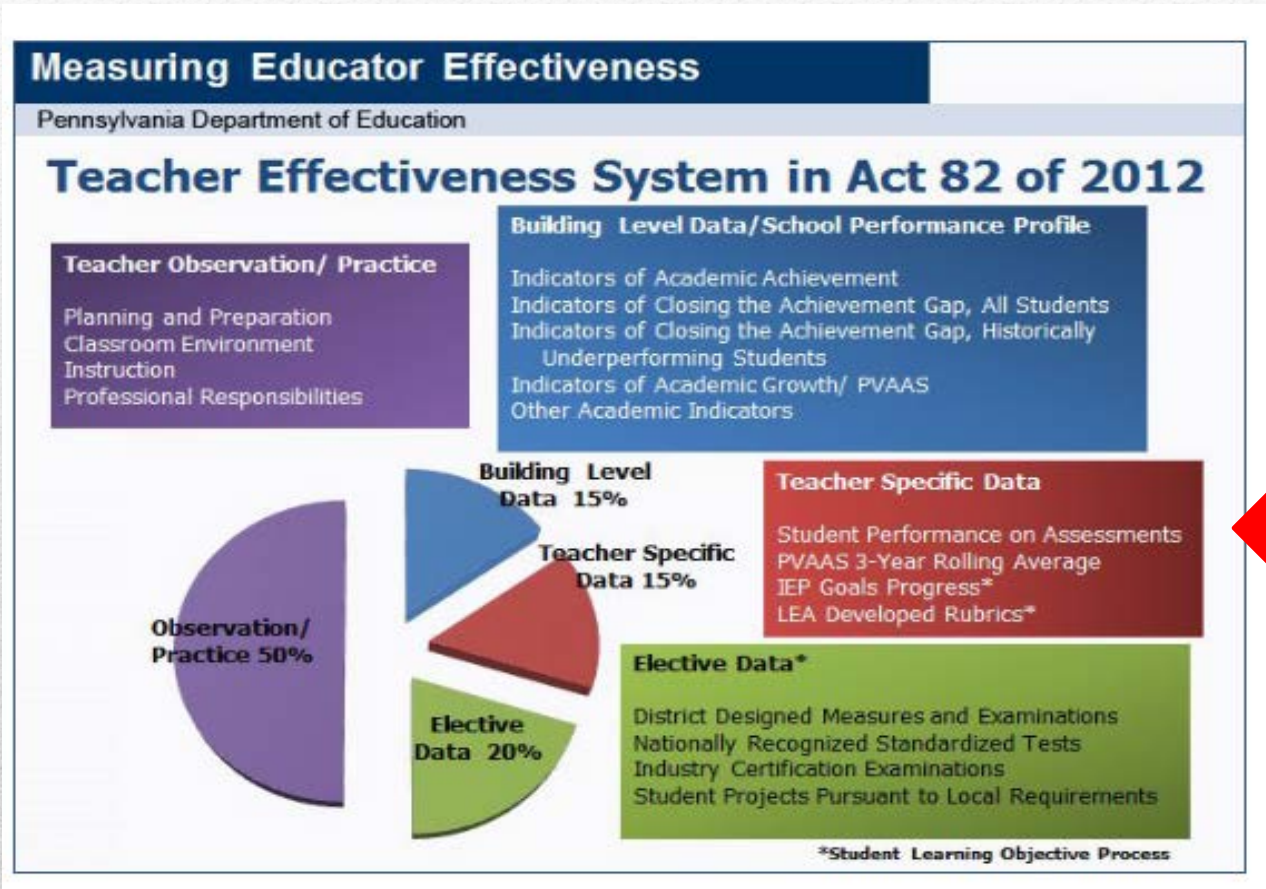


Teacher Specific Data

Updated 1/2017



Teacher Specific Data refers to the red section of the Educator Effectiveness Model.





Teacher Specific Data comprises 15% of the final evaluation and will include the following data when it is available and applicable.

Student Performance on Assessment

Value Added Assessment Data

Progress in meeting the goals of student IEP (SLO process)

Locally Developed Rubric (SLO process-assessments defined in elective)



The state provides specific parameters to determine the percent of each data element.

Student Performance on Assessment	Shall comprise no more than 5%
Value Added Assessment Data	Shall comprise not less than 10% nor more than 15%
Progress in meeting the goals of student IEP (SLO process)	Shall comprise no more than 5%
Locally Developed Rubric (SLO process-assessments defined in elective)	Shall comprise no more than 15%



The Teacher Specific Data Committee developed four categories using the parameters to determine the percentage of each data element. Teachers will fall into one of these categories.

Erie's Public Schools-Teacher Specific Data

The following charts apply when the data is available and applicable and the final evaluation form is 82-1.

Teachers With 11 or More IEP Students Without PSSA/Keystone/PASA	Teacher Specific Data
Grades K-12/School Wide Support/Related Arts/Fine Arts/CTE/Speech Teachers	1. Student Performance on Assessment 0% 2. Value Added (PVAAS) 0% 3. Progress Meeting the Goals of IEP students 5% 4. Locally Developed Rubric 10%

Teachers With 11 or More IEP Students With PSSA/Keystone/PASA	Teacher Specific Data
Grade 3 Teachers/Grades 4-12 without PVAAS data (Group A)	1. Student Performance on Assessment 5% 2. Value Added (PVAAS) 0% 3. Progress Meeting the Goals of IEP students 5% 4. Locally Developed Rubric 5%
Grades 4-12 Teachers (Group B)	1. Student Performance on Assessment 1% 2. Value Added (PVAAS) 10% 3. Progress Meeting the Goals of IEP students 2% 4. Locally Developed Rubric 2%








Teachers With Less Than 11 IEP Students Without PSSA/Keystone/PASA	Teacher Specific Data
Grades K-12/School Wide Support/Related Arts/Fine Arts/CTE	1. Student Performance on Assessment 0% 2. Value Added (PVAAS) 0% 3. Progress Meeting the Goals of IEP students 0% 4. Locally Developed Rubric 15%

Teachers With Less Than 11 IEP Students With PSSA/Keystone/PASA	Teacher Specific Data
Grade 3 Teachers/Grades 4-12 without PVAAS data (Group A)	1. Student Performance on Assessment 5% 2. Value Added (PVAAS) 0% 3. Progress Meeting the Goals of IEP students 0% 4. Locally Developed Rubric 10%
Grade 4-12 Teachers (Group B)	1. Student Performance on Assessment 1% 2. Value Added (PVAAS) 10% 3. Progress Meeting the Goals of IEP students 0% 4. Locally Developed Rubric 4%



Clicking the calculator on the 82-1 will assist in calculating the rating.

<p>(3) Teacher Specific Rating  </p> <p><input type="checkbox"/> Not Available</p>	
<p>(4) Elective Rating </p> <p><input type="checkbox"/> Not Available</p>	



Choose the correct category from the preset drop down. The percent assigned will automatically fill in.

Teacher Specific Rating Calculator

ⓧ Cancel

Select 82 Form '% Assigned' Preset (optional):

PINK GROUP B: Teachers With 11 or More IEP Students With PSSA/Keystone/PASA

School Year: 2016-17 ?

Description: Grade 4-12 Teachers

Use this section to combine multiple teacher specific data to determine a final teacher specific rating.

Teacher Specific Data ?	% Assigned Valid Range	% Assigned ?	Rating	Earned Points	Max Points
Student Performance on Assessments ?	0.0 - 5.0%	1	0 ▾	0.00000	0.03000
Value-Added Assessment System Data ?	0.0, 10.0 - 15.0% (if available)	10	0 ▾	0.00000	0.30000
Progress in Meeting Goals of Student IEPs ?	0.0 - 5.0%	2	0 ▾	0.00000	0.06000
Locally Developed School District Rubrics ?	0.0 - 15.0%	2	0 ▾	0.00000	0.06000
Totals		15.0	0.0000	0.00000	0.45000
Calculated Teacher Specific Rating (Earned Points / Possible Points) * 3				0.00000	
Final Combined Teacher Specific Rating (truncated to two decimal places)				0.00	

* Must total 15% to determine a valid final teacher specific rating

* If % assigned entry is made beyond one decimal place, the system will round that entry to one decimal place for subsequent calculations.

Use Score



Student Performance on Assessment: Percentage of the classroom teacher's students who score proficient or advanced on the applied state assessments

- Click the question mark to view the conversion chart
- Use the table to convert the percentage of students proficient or advanced to a rating
- This number is placed in the rating column

Teacher Specific Rating Calculator Cancel

Select 82 Form '% Assigned' Preset (optional):
PINK GROUP A: Grade 3 Teachers With 11 or More IEP Students With PSSA/Keystone School Year: 2015-16
Description: Grade 3 Teachers

Use this section to enter PVAAS 3 year rolling average score (if available).

To automatically calculate converted value, enter the value-added assessment (3 year rolling average) score	0
Value-added assessment score converted to the 0 to 3 rating	0.00

Use this section to combine multiple teacher specific data to determine a final teacher specific rating.

Teacher Specific Data	% Assigned Valid Range	% Assigned	Rating	Earned Points	Max Points
Student Performance on Assessments	0.0 - 5.0%	5	0	0.00000	0.15000
Value-Added Assessment System Data				0.00000	0.00000
Progress in Meeting Goals of Student IEP				0.00000	0.15000
Locally Developed School District Rubric				0.00000	0.15000
Totals				0.00000	0.45000

Use the following state provided table when inputting the Student Performance on Assessment value:

Percent of Students Proficient or Advanced	0 - 3 Rating Scale
95 - 100%	3.0
90 - 94.9%	2.5
80 - 89.9%	2.0
70 - 79.9%	1.5
65 - 69.9%	1.0
60 - 64.9%	0.5
Below 60%	0.0

* Must total 15% to determine a valid final teacher rating
* If % assigned entry is made beyond one decimal place, the final rating will be 0.00

Total Earned Points (truncated to two decimal places): 0.00

Performance Rating: 0

Use Score



Value Added Assessment Data: *Teacher specific growth data as provided for each PA assessed subject/grade/course for each year it is available based upon a three-year rolling average of available assessment data of the most recent three consecutive years.*

- Click on the person icon
- Click on your school's spreadsheet from the list
- Enter the password you have been given to open the list (continued on next slide)

Teacher Specific Rating Calculator

Select 82 Form '% Assigned' Preset (optional):

School Year: 2016-17

Description: Grade 4-12 Teachers

Use this section to combine multiple teacher specific data to determine a final rating.

Teacher Specific Data	% Assigned Value Range	Value-Added Assessment System Data	Progress in Meeting Goals of Student IEPs	Locally Developed School District Rubrics	Totals
Student Performance on Assessments	0.0 - 5.0%	10	2	2	15.0
Value-Added Assessment System Data	0.0, 10.0 - 15.0% (if available)	0.00000	0.06000	0.06000	0.12000
Progress in Meeting Goals of Student IEPs	0.0 - 5.0%	0.00000	0.06000	0.06000	0.12000
Locally Developed School District Rubrics	0.0 - 15.0%	0.00000	0.06000	0.06000	0.12000
Calculated Teacher Specific Rating (Earned Points / Possible Points) * 3					0.00000
Final Combined Teacher Specific Rating (truncated to two decimal places)					0.00

- [Teacher_Value_Added_Jefferson_2016.xlsx](#)
- [Teacher_Value_Added_Lincoln_2016.xlsx](#)
- [Teacher_Value_Added_McKinley_2016.xlsx](#)
- [Teacher_Value_Added_PB_2016.xlsx](#)
- [Teacher_Value_Added_Perry_2016.xlsx](#)
- [Teacher_Value_Added_Roosevelt_2016.xlsx](#)
- [Teacher_Value_Added_SV_2016.xlsx](#)
- [Teacher_Value_Added_Wayne_2016.xlsx](#)
- [Teacher_Value_Added_Wilson_2016.xlsx](#)

PVAAS scores can be exported from the PVAAS site (<https://pvaas.sas.com/>) and uploaded into PA-EETEP. To learn more, click [here](#).

* Must total 15% to determine a valid final teacher specific rating

* If % assigned entry is made beyond one decimal place, the system will round that entry to one decimal place for subsequent calculations.

[Use Score](#)



Value Added Assessment Data Continued

-Look up the teacher's 3 year rolling average from column N (highlighted in yellow)

-That number is placed under the rating column

***If a teacher is not listed on the spreadsheet then he/she does not have a 3 year rolling average. A different category should be selected.**

Teacher Specific Rating Calculator

⊗ Cancel

Select 82 Form '% Assigned' Preset (optional):

PINK GROUP B: Teachers With 11 or More IEP Students With PSSA/Keystone/PASA

School Year: 2016-17

Description: Grade 4-12 Teachers

Use this section to combine multiple teacher specific data to determine a final teacher specific rating.

Teacher Specific Data	% Assigned Valid Range	% Assigned	Rating	Earned Points	Max Points
Student Performance on Assessments	0.0 - 5.0%	1	0	0.00000	0.03000
Value-Added Assessment System Data	0.0, 10.0 - 15.0% (if available)	10	0.42		0.30000
Progress in Meeting Goals of Student IEPs	0.0 - 5.0%	2	0	0.00000	0.06000
Locally Developed School District Rubrics	0.0 - 15.0%	2	0	0.00000	0.06000
Totals		15.0	0.0000	0.04200	0.45000
Calculated Teacher Specific Rating (Earned Points / Possible Points) * 3				0.28000	
Final Combined Teacher Specific Rating (truncated to two decimal places)				0.28	

* Must total 15% to determine a valid final teacher specific rating

* If % assigned entry is made beyond one decimal place, the system will round that entry to one decimal place for subsequent calculations.

Use Score



IEP Progress: *When the data is applicable and available, teachers will work in collaboration with administrators to set goal statements related to special education students meeting IEP goals. Teachers may use aggregate goals of all students on their caseload. A rubric will be used to determine the rating.*

Rubric:

- 0-24% of student IEP goals met = 0
- 25-49% of student IEP goals met = 1
- 50-74% of student IEP goals met = 2
- 75-100% of student IEP goals met = 3

-Enter the rating on the 82-1

Teacher Specific Rating Calculator ⊗ Cancel

Select 82 Form '% Assigned' Preset (optional):
 PINK GROUP A: Grade 3 Teachers With 11 or More IEP Students With PSSA/Keystone School Year: 2015-16 ?
 Description: Grade 3 Teachers

Use this section to enter PVAAS 3 year rolling average score (if available).

To automatically calculate the converted value, enter the value-added assessment (3 year rolling average) score	0 ?
Value-added assessment score converted to the 0 to 3 rating	0.00

Use this section to combine multiple teacher specific data to determine a final teacher specific rating.

Teacher Specific Data ?	% Assigned Valid Range	% Assigned ?	Rating ?	Earned Points	Max Points
Student Performance on Assessments ?	0.0 - 5.0%	5	0 ▾	0.00000	0.15000
Value-Added Assessment System Data ?	0.0, 10.0 - 15.0% (if available)	0	0.00	0.00000	0.00000
Progress in Meeting Goals of Student IEPs ?	0.0 - 5.0%	5	0 ▾	0.00000	0.15000
Locally Developed School District Rubrics ?	0.0 - 15.0%	5	0 ▾	0.00000	0.15000
Totals		15.0	0.0000	0.00000	0.45000
Calculated Teacher Specific Rating (Earned Points / Possible Points) * 3				0.00000	
Final Combined Teacher Specific Rating (truncated to two decimal places)				0.00	

* Must total 15% to determine a valid final teacher specific rating
 * If % assigned entry is made beyond one decimal place, the system will round that entry to one decimal place for subsequent calculations.

Use Score



Student Learning Objective Process for IEP Progress

Student Learning Objective (SLO) Process for IEP Progress-Teacher Specific Data

Teacher/Class					
1a. Name		1b. School		1c. District	
1d. Class/ Course Title		1e. Grade Level		1f. TotalNo. Students	
1g. Typical Class Size		1h. Class Frequency		1g. Typical Class Duration	

SLO Goal related to Progress in Meeting the Goals of Student Individualized Education Plans as required under the Individuals with Disabilities Education Act and Chapter 14)	
2a. Goal Statement	Target population of students will make meaningful progress towards meeting their (ex. reading, writing, math, behavior) goals as defined in their respective IEPs and measured by ongoing progress monitoring data
2b. Rationale	Mandated requirement of IDEA 2004, based on Present Levels of academic and functional performance and baseline data of the student's IEP.



Rating				
3a. Level	<i>Failing</i> _0%_ to _24%_ of IEP goals met as documented by IEP progress monitoring data AND/OR No IEP Review Convened	<i>Needs Improvement</i> _25%_ to _49%_ of IEP goals met as documented by IEP progress monitoring data AND IEP Review meeting was convened. *No IEP Review is Automatic Needs Improvement	<i>Proficient</i> _50%_ to _74%_ of IEP goals met as documented by IEP progress monitoring data AND IEP Review meeting convened. *No IEP Review is Automatic Needs Improvement.	<i>Distinguished</i> _75%_ to _100%_ of IEP goals met as documented by IEP progress monitoring data and IEP Review meeting held if less than 100% of goals are being met. *No IEP Review is Automatic Needs Improvement.



Locally Developed Rubric: *The teacher may choose between using their observation/practice score or by writing an additional SLO. The administrator can send a message through PA-ESEP or by email requesting the teacher's choice, and the teacher will respond with their choice. Teachers must respond by October 1st with their SLO or decision to use their observation score.*

****Note: If you use the Teacher Observation and Practice number for this section and the number is a decimal , round up to the closest whole number***

-Enter the rating on the 82-1

Teacher Specific Rating Calculator ⓧ Cancel

Select 82 Form '% Assigned' Preset (optional):
 PINK GROUP A: Grade 3 Teachers With 11 or More IEP Students With PSSA/Keystone School Year: 2015-16 ?
 Description: Grade 3 Teachers

Use this section to enter PVAAS 3 year rolling average score (if available).

To automatically calculate the converted value, enter the value-added assessment (3 year rolling average) score	0 ?
Value-added assessment score converted to the 0 to 3 rating	0.00

Use this section to combine multiple teacher specific data to determine a final teacher specific rating.

Teacher Specific Data ?	% Assigned Valid Range	% Assigned ?	Rating	Earned Points	Max Points
Student Performance on Assessments ?	0.0 - 5.0%	5	0 ▾	0.00000	0.15000
Value-Added Assessment System Data ?	0.0, 10.0 - 15.0% (if available)	0	0.00	0.00000	0.00000
Progress in Meeting Goals of Student IEPs ?	0.0 - 5.0%	5	0 ▾	0.00000	0.15000
Locally Developed School District Rubrics ?	0.0 - 15.0%	5	0 ▾	0.00000	0.15000
Totals		15.0	0.0000	0.00000	0.45000
Calculated Teacher Specific Rating (Earned Points / Possible Points) * 3				0.00000	
Final Combined Teacher Specific Rating (truncated to two decimal places)				0.00	

* Must total 15% to determine a valid final teacher specific rating
 * If % assigned entry is made beyond one decimal place, the system will round that entry to one decimal place for subsequent calculations.

Use Score



After all ratings are entered, click 'Use Score'

Teacher Specific Rating Calculator

ⓧ Cancel

Select 82 Form '% Assigned' Preset (optional):

PINK GROUP B: Teachers With 11 or More IEP Students With PSSA/Keystone/PASA

School Year: 2016-17

Description: Grade 4-12 Teachers

Use this section to combine multiple teacher specific data to determine a final teacher specific rating.

Teacher Specific Data	% Assigned Valid Range	% Assigned	Rating	Earned Points	Max Points
Student Performance on Assessments	0.0 - 5.0%	1	1	0.01000	0.03000
Value-Added Assessment System Data	0.0, 10.0 - 15.0% (if available)	10	0.41	0.04100	0.30000
Progress in Meeting Goals of Student IEPs	0.0 - 5.0%	2	3	0.06000	0.06000
Locally Developed School District Rubrics	0.0 - 15.0%	2	2	0.04000	0.06000
Totals		15.0	0.0000	0.15100	0.45000
Calculated Teacher Specific Rating (Earned Points / Possible Points) * 3				1.00667	
Final Combined Teacher Specific Rating (truncated to two decimal places)				1.00	

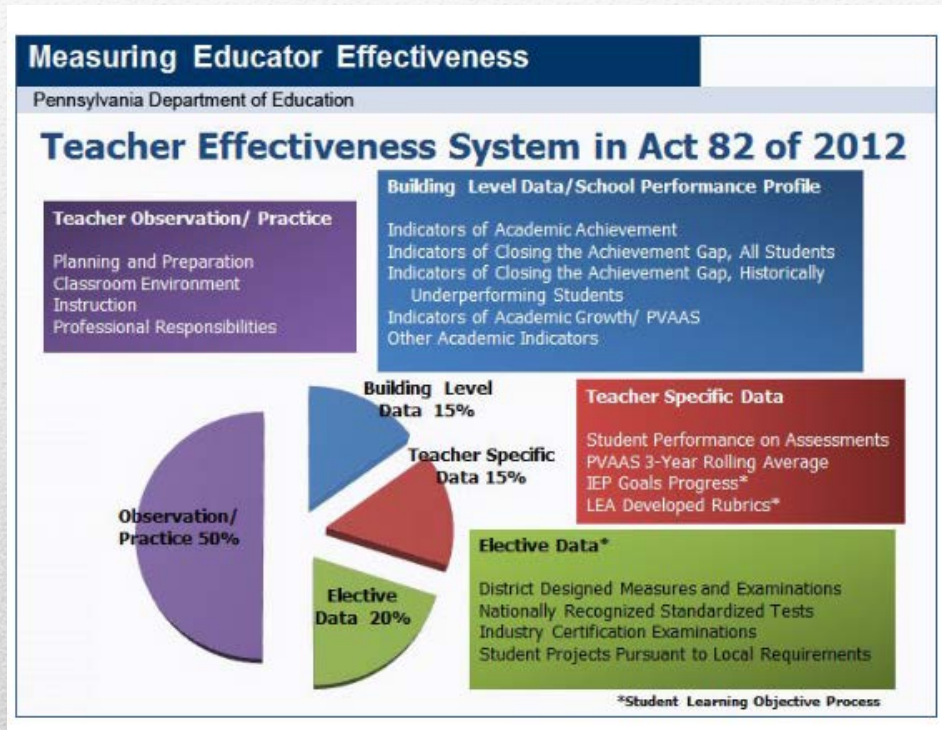
* Must total 15% to determine a valid final teacher specific rating

* If % assigned entry is made beyond one decimal place, the system will round that entry to one decimal place for subsequent calculations.

Use Score



If you have questions contact a member of the Teacher Specific Sub Committee:
Paulette Zagorski, Angie Kownacki, Doug Owens, Bill Kuhar, Jennifer McLallen, Kristina Bokulich, Nora Dolak, or Gita Dev



Thank you for your time!
